



The consortium consists of 15 partners from 13 countries in Europe, USA and Canada. These partners have joined forces to improve the capacities for marine-based research in the ice-covered Arctic Ocean.



Contact information:

Dr Nicole Biebow

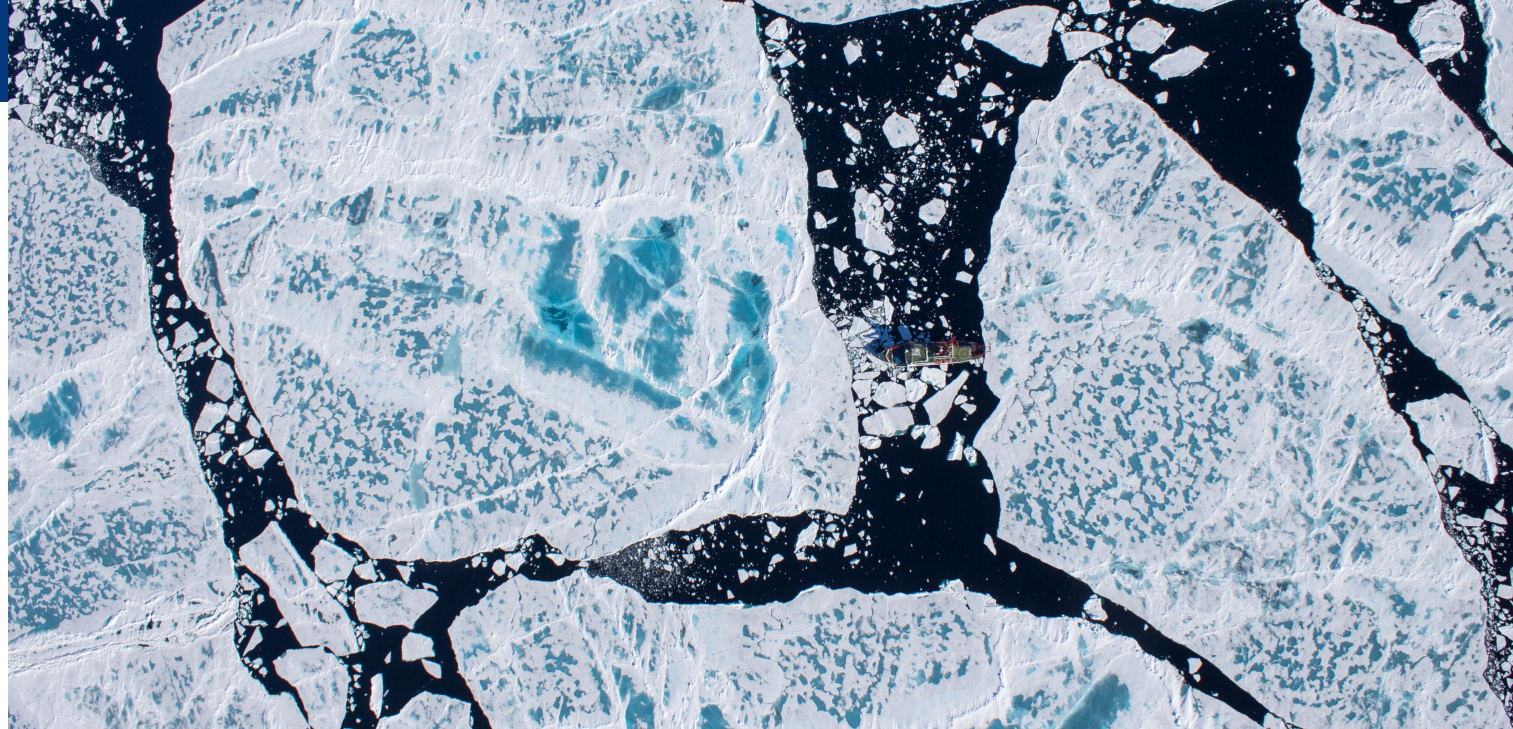
Nicole.Biebow@awi.de

ARICE Project Coordinator

Dr Veronica Willmott

Veronica.Willmott@awi.de

ARICE Project Manager



ARICE

Arctic Research Icebreaker Consortium

ARICE - EU Horizon 2020

Knowledge - infrastructure

Duration: 01/2018 - 12/2021

EU contribution: €6M

www.arice.eu



**Making the Arctic
accessible for
excellent science**



ARICE project has received funding from the European Union's Horizon 2020 research and innovation programme under grant agreement No 730965. The content of the document is the sole responsibility of the organizer and it does not represent the opinion of the European Commission and the Commission is not responsible for any use that might be made of the information contained.

www.arice.eu

GOALS & OBJECTIVES

Providing better capacities for marine-based research in the ice-covered Arctic Ocean

1. Networking

Develop strategies to ensure the **optimal use of existing polar research vessels** at a European and international level, working towards an international **Arctic Research Icebreaker Consortium** which **shares and jointly funds operational ship time** on the available research icebreakers.

2. Joint Research Activities

To improve the research icebreakers' services by partnering with the maritime industry on a „**ships and platforms of opportunity**“ programme and by exploring into **new key technologies** that could lead to an improvement of ship-based and autonomous measurements in the Arctic Ocean. Arice will also implement virtual and remote access to data via an innovative **3D Virtual Icebreaker**.

3. Transnational access

ARICE will provide transnational access to four European and two international research icebreakers. Access is granted based on scientific excellence of the research proposals, which researchers need to submit during the application process. The participating icebreakers are:

- PRV Polarstern, Germany
- IB Oden, Sweden
- RV Kronprins Haakon, Norway
- MSV Fennica, Finland
- CCGS Amundsen, Canada
- RV Sikuliaq, United States of America



Partners



ALFRED-WEGENER-INSTITUT
HELMHOLTZ-ZENTRUM FÜR POLAR-
UND MEERESFORSCHUNG



College of
Fisheries and
Ocean Sciences



The International Business Alliance
for Corporate Ocean Responsibility



ARCTIC PORTAL



Consiglio Nazionale
delle Ricerche



ARCTIA



CNRS



Technical
University of
Denmark



Association of Polar
Early Career Scientists



SWEDISH POLAR
RESEARCH SECRETARIAT



POLAR-RESEARCH-INSTITUT



FINNISH METEOROLOGICAL INSTITUTE



British
Antarctic Survey
NATURAL ENVIRONMENT RESEARCH COUNCIL



UNIVERSITÉ
LAVAL



CONSEJO SUPERIOR DE INVESTIGACIONES CIENTÍFICAS